

Surface Mount Frequency Mixer

LRMS-2MH+ LRMS-2MH

Level 13 (LO Power +13dBm) 5 to 1000 MHz



CASE STYLE: QQQ130

+RoHS Compliant
The +Suffix identifies RoHS Compliance. See our web site for RoHS Compliance methodologies and qualifications

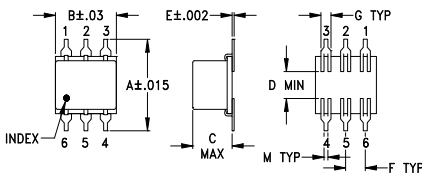
Maximum Ratings

Operating Temperature	-40°C to 85°C
Storage Temperature	-55°C to 100°C
RF Power	200mW
IF Current	40mA
Permanent damage may occur if any of these limits are exceeded.	

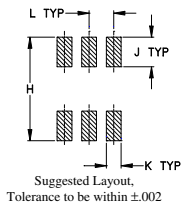
Pin Connections

LO	1
RF	4
IF	5
GROUND	2,3,6

Outline Drawing



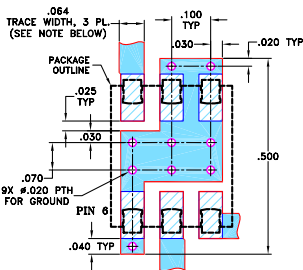
PCB Land Pattern



Outline Dimensions (inch/mm)

A	B	C	D	E	F	G	
.400	.31	.200	.10	.010	.100	.050	
10.16	7.87	5.08	2.54	0.25	2.54	1.27	
H	J	K	L	M		wt	
.420	.120	.060	.100	.020		grams	
10.67	3.05	1.52	2.54	0.51		0.55	

Demo Board MCL P/N: TB-44+ Suggested PCB Layout (PL-083)



- NOTES: 1. TRACE WIDTH IS SHOWN FOR ROGERS RO4350B WITH DIELECTRIC THICKNESS 0.030" ± 0.002"; COPPER: 1/2 OZ. EACH SIDE. FOR OTHER MATERIALS TRACE WIDTH MAY NEED TO BE MODIFIED.
2. BOTTOM SIDE OF THE PCB IS CONTINUOUS GROUND PLANE.
■ DENOTES PCB COPPER LAYOUT WITH SMOBC (SOLDER MASK OVER BARE COPPER)
□ DENOTES COPPER LAND PATTERN FREE OF SOLDER MASK
- Notes
A. Performance and quality attributes and conditions not expressly stated in this specification document are intended to be excluded and do not form a part of this specification document.
B. Electrical specifications and performance data contained in this specification document are based on Mini-Circuit's applicable established test performance criteria and measurement instructions.
C. The parts covered by this specification document are subject to Mini-Circuits standard limited warranty and terms and conditions (collectively, "Standard Terms"); Purchasers of this part are entitled to the rights and benefits contained therein. For a full statement of the Standard Terms and the exclusive rights and remedies thereunder, please visit Mini-Circuits' website at www.minicircuits.com/MCLStore/terms.jsp

Features

- low conversion loss, 6.72 dB typ.
- good L-R isolation, 39 dB typ.

Applications

- HF/VHF/UHF
- instrumentation
- cellular

Electrical Specifications

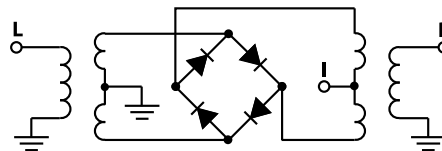
FREQUENCY (MHz)	CONVERSION LOSS (dB)	LO-RF ISOLATION (dB)			LO-IF ISOLATION (dB)								
		L	M	U	L	M	U						
5-1000	DC-1000	55	40	39	20	22	16	52	35	30	17	18	12

1 dB COMP.: +9 dBm typ.
L = low range [f_l to $10 f_l$]
M = mid band [$2f_l$ to $f_u/2$]
U = upper range [$f_u/2$ to f_u]

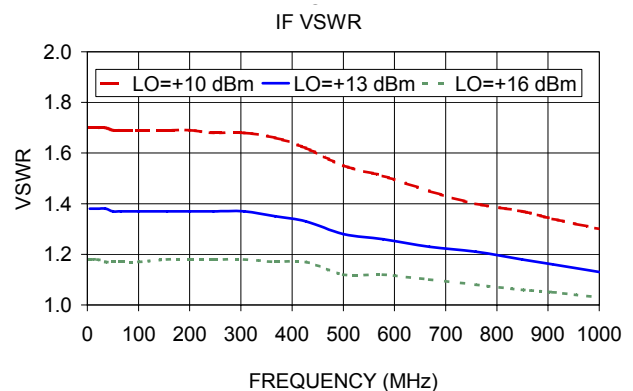
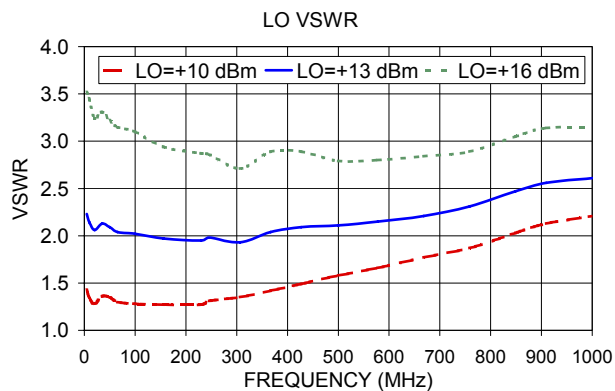
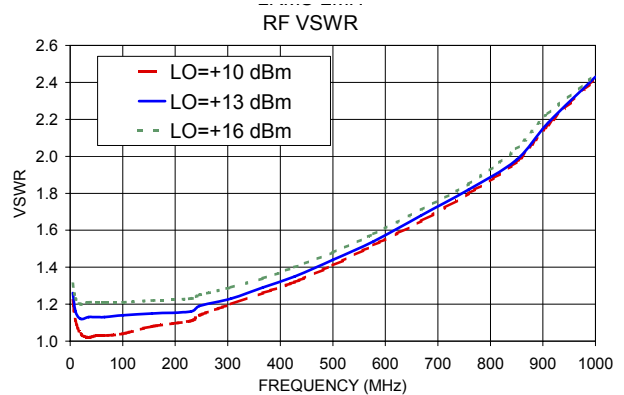
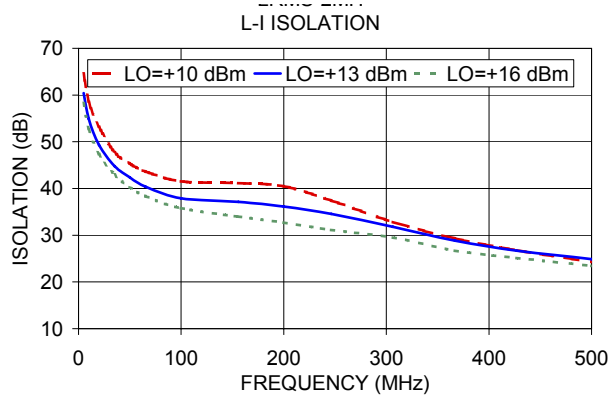
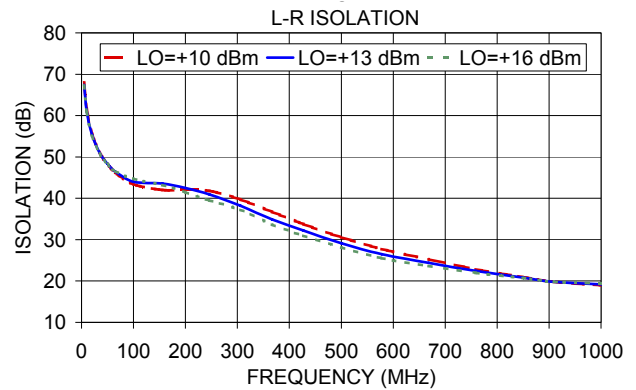
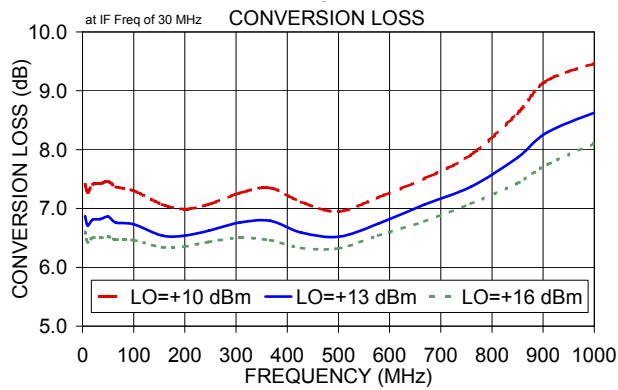
Typical Performance Data

Frequency (MHz)		Conversion Loss (dB)	Isolation L-R (dB)	Isolation L-I (dB)	VSWR RF Port (:1)	VSWR LO Port (:1)
RF	LO	LO +13dBm	LO +13dBm	LO +13dBm	LO +13dBm	LO +13dBm
5.00	35.00	6.87	67.46	60.42	1.26	2.23
10.00	40.00	6.71	61.14	54.89	1.16	2.14
20.00	50.00	6.81	55.36	49.28	1.12	2.06
35.15	65.15	6.82	50.90	44.75	1.13	2.13
50.00	80.00	6.86	48.33	42.38	1.13	2.09
65.30	95.30	6.76	46.42	40.39	1.13	2.04
100.00	70.00	6.73	44.03	37.91	1.14	2.02
155.76	125.76	6.54	43.58	37.14	1.15	1.97
200.00	170.00	6.54	42.48	36.16	1.16	1.95
246.21	216.21	6.62	40.92	34.54	1.19	1.98
306.52	276.52	6.76	38.19	31.82	1.23	1.93
366.82	336.82	6.79	34.91	28.84	1.29	2.04
427.12	397.12	6.59	32.18	26.69	1.35	2.09
500.00	470.00	6.52	29.15	24.87	1.44	2.11
577.88	547.88	6.74	26.48	22.60	1.54	2.15
668.33	638.33	7.07	24.41	20.55	1.68	2.21
758.79	728.79	7.37	22.47	18.54	1.82	2.31
849.24	819.24	7.86	20.85	16.52	1.98	2.47
909.55	879.55	8.30	19.83	15.54	2.18	2.56
1030.00	970.00	8.73	19.01	14.41	2.43	2.61

Electrical Schematic



Performance Charts



Notes

- A. Performance and quality attributes and conditions not expressly stated in this specification document are intended to be excluded and do not form a part of this specification document.
- B. Electrical specifications and performance data contained in this specification document are based on Mini-Circuit's applicable established test performance criteria and measurement instructions.
- C. The parts covered by this specification document are subject to Mini-Circuits standard limited warranty and terms and conditions (collectively, "Standard Terms"); Purchasers of this part are entitled to the rights and benefits contained therein. For a full statement of the Standard Terms and the exclusive rights and remedies thereunder, please visit Mini-Circuits' website at www.minicircuits.com/MCLStore/terms.jsp

